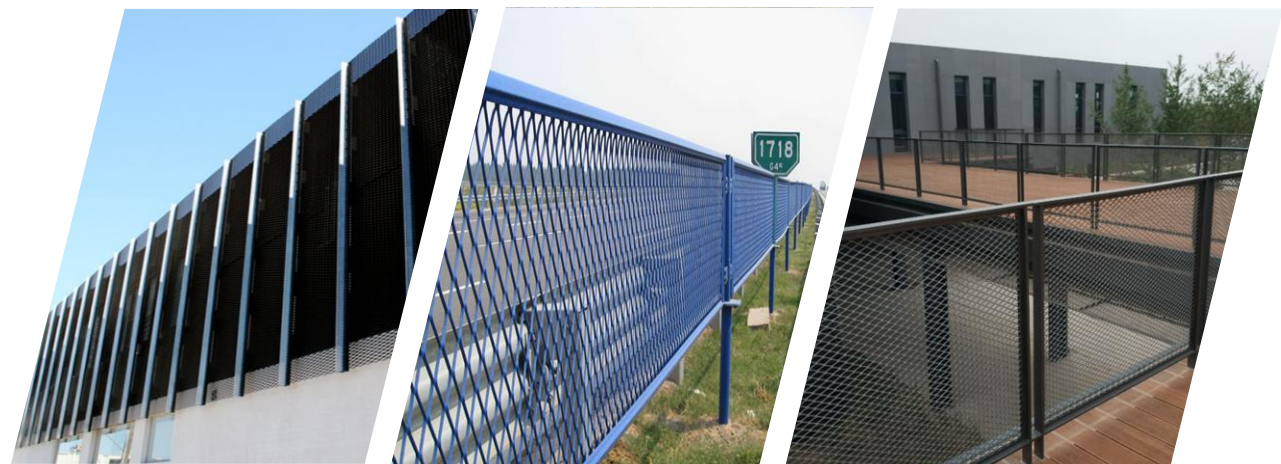
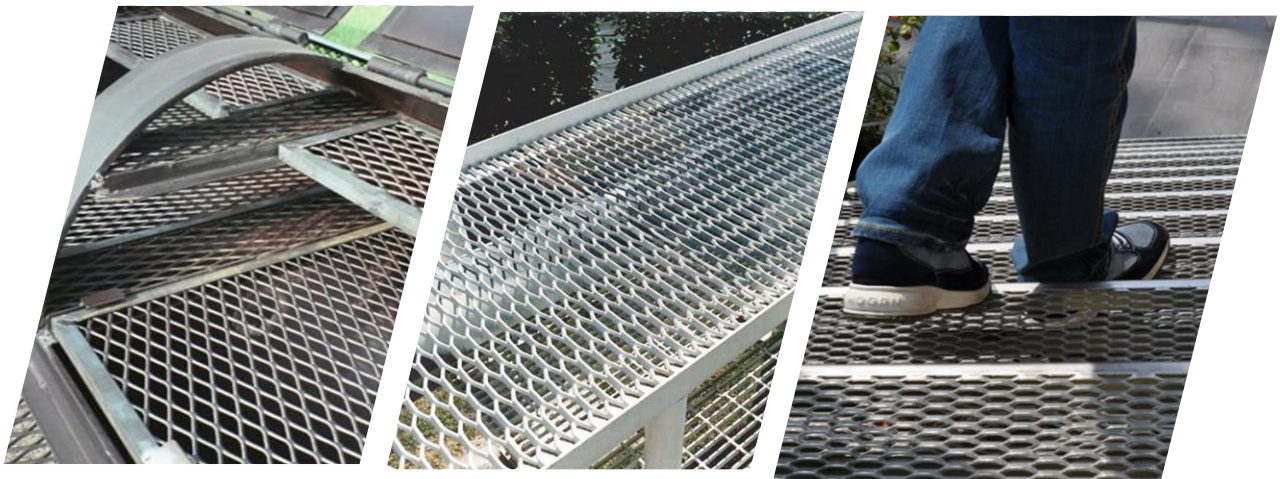




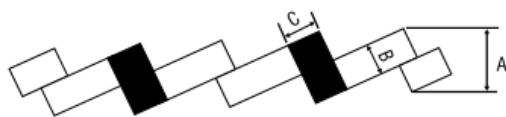
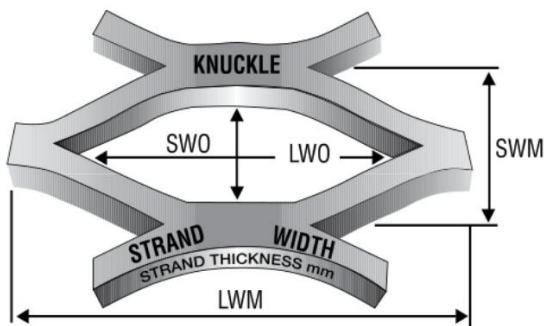
34 years manufacture history

INDUSTRIAL / ARCHITECTURAL EXPANDED METAL



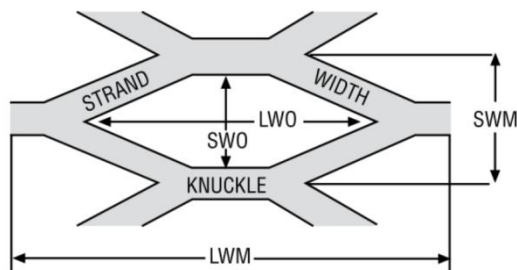
EXPANDED METAL

Regular expanded metal is produced by slitting and stretching steel sheet. The illustration below shows the strands and bonds forming a sharp angle and bonds forming a sharp angle to the original plane of the solid sheet.



"A" Overall thickness "B" Strand Width
"C" Strand thickness

Flattened expanded metal is regular expanded metal that has been cold rolled after being expanded, leaving a flat, and smooth surface. The weight is 5% less than the same style of regular type.



"A" Overall thickness and strand thickness

LWM:

The distance from a point on a knuckle to a joint point on the following knuckle measured across the long way.

SWM:

The distance from a point on knuckle to a joint point on the following knuckle measure across the short way.

LWO:

Long way of opening, the distance measured from the inside of the knuckle across to the inside of the knuckle LWO

SWO:

Short way of opening, the distance measured from the knuckle across to the inside of the knuckle SWO

KNUCKLE:

The intersection of two strands and it is always the width of two strands

OVERAL THICKNESS:

The actual measurement of the thickness of the mesh measured at the knuckle.

OPEN AREA:

The percentage of open area is showing on the mesh

STAG ENDS:

Incomplete strands existing beyond the joints of mesh either LWD, SWD or both.

MATERIAL:

The material is available in carbon steel, galvanized sheet, stainless steel, aluminum etc.

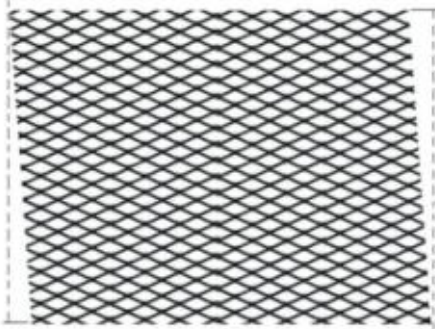
CUSTOMIZE:

Customized is available.

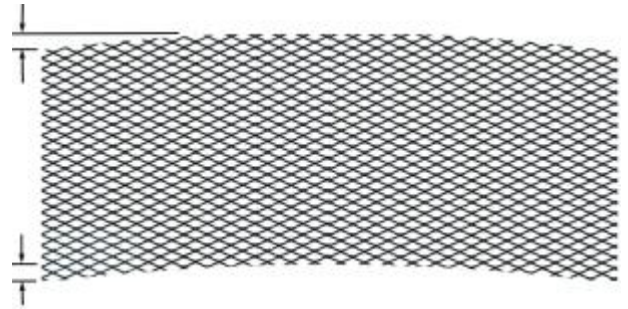
ORDERING EXPANDED METAL

TOLERANCE / HOW TO ORDER EXPANDED METAL

Out of Square: Squareness after flattening-ends shall not be more than 1/8 inch per foot of square or 3/8 inch overall in relation to the side of sheet



Camber: The max deviation of a side edge from a straight line shall not exceed 1/16" per foot of dimension; After flattening, this number shall not exceed 3/32".

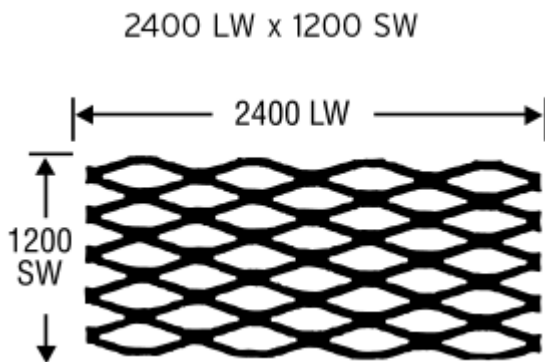


When ordering expanded metals, please state the following complete specifications to avoid any error:

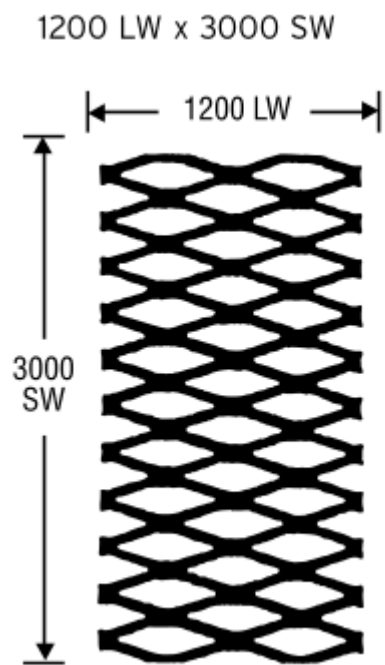
- 1. Style of mesh:** such as 3/4 #9, 1/2#16..
- 2. Quantity of sheets.**
- 3. Sheet size:** LWD dimension and SWD dimension.
- 4. Type of material:** steel ,SS or aluminum
- 5. Finish:** untreated or galvanized
- 6. Regular or flattened.**
- 7. Tolerances if required.**

For Example:

- (1) Quantity: 200 sheets of expanded metal ;
- (2) Style: 1/2#13 Regular;
- (3) Sheet Size: 48" SWD x 96"LWD;
- (4) Material: Carbon steel



EXAMPLE A



EXAMPLE B

AMERICAN STANDARD

NOMINAL WEIGHTS AND DIMENSIONS

Refer- No.	Style	Minimum thickness (In) A	Nominal Weight in Lbs. per 100 Sq.Ft.B	Design Size (In) C		Opening Size (In) C		Strand Size (In)		Overall Thickness (In)	No. of Diamonds Per Ft.		Open Area (%)
				SWD	LWD	SWO	LWO	width	Thickness		SWD	LWD	
FLATTENED-CARBON STEEL													
HJE-001	1/4"-#20	0.026	74	0.250	1.05	0.092	0.715	0.079	0.029	0.029	48	11.4	37
HJE-002	1/4"-#18	0.034	100	0.250	1.05	0.090	0.715	0.080	0.038	0.038	48	11.4	36
HJE-003	1/2"-#20	0.026	37	0.500	1.26	0.342	1.000	0.079	0.029	0.029	24	9.5	68
HJE-004	1/2"-#18	0.034	61	0.500	1.26	0.306	1.000	0.097	0.038	0.038	24	9.6	61
HJE-005	1/2"-#16	0.043	77	0.500	1.26	0.304	1.000	0.098	0.048	0.048	24	9.5	61
HJE-006	1/2"-#13	0.066	126	0.500	1.26	0.286	1.000	0.107	0.072	0.072	24	9.5	57
HJE-007	3/4"-#16	0.043	47	0.923	2.10	0.701	1.750	0.111	0.048	0.048	13	5.7	76
HJE-008	3/4"-#14	0.054	56	0.923	2.10	0.713	1.760	0.105	0.060	0.060	13	5.7	77
HJE-009	3/4"-#13	0.066	67	0.923	2.10	0.711	1.781	0.106	0.072	0.072	13	5.7	77
HJE-010	3/4"-#10	0.066	102	0.923	2.10	0.603	1.755	0.160	0.072	0.072	13	5.7	65
HJE-011	3/4"-#9	0.101	157	0.923	2.10	0.593	1.688	0.165	0.108	0.108	13	5.7	64
HJE-012	1"-#16	0.043	38	1.000	2.52	0.804	2.250	0.098	0.048	0.048	12	4.8	80
HJE-013	1 1/2"-#16	0.043	35	1.330	3.15	1.092	2.750	0.119	0.048	0.048	9	3.8	82
HJE-014	1 1/2"-#14	0.054	43	1.330	3.15	1.098	2.750	0.116	0.060	0.060	9	3.8	83
HJE-015	1 1/2"-#13	0.066	51	1.330	3.15	1.098	2.750	0.116	0.072	0.072	9	3.8	83
HJE-016	1 1/2"-#9	0.101	105	1.330	3.15	1.014	2.563	0.158	0.108	0.108	9	3.8	76
FLATTENED-STAINLESS STEEL													
HJE-017	1/2"-#18	0.037	66	0.500	1.26	0.304	1.000	0.098	0.041	0.041	24	9.5	61
HJE-018	1/2"-#16	0.047	84	0.500	1.26	0.302	1.000	0.099	0.051	0.051	24	9.5	60
HJE-019	1/2"-#13	0.072	136	0.500	1.26	0.236	0.915	0.107	0.076	0.076	24	9.5	57
HJE-020	3/4"-#18	0.037	43	0.923	2.10	0.687	1.812	0.118	0.041	0.041	13	5.7	74
HJE-021	3/4"-#16	0.047	54	0.923	2.10	0.687	1.812	0.118	0.051	0.051	13	5.7	74
HJE-022	3/4"-#13	0.072	83	0.923	2.10	0.683	1.750	0.120	0.076	0.076	13	5.7	74
HJE-023	3/4"-#9	0.108	185	0.923	2.10	0.593	1.687	0.179	0.114	0.114	13	5.7	61
HJE-024	1 1/2"-#16	0.047	41	1.330	3.15	1.074	2.750	0.128	0.051	0.051	9	3.8	81
HJE-025	1 1/2"-#13	0.072	62	1.330	3.15	1.070	2.625	0.130	0.076	0.076	9	3.8	80
HJE-026	1 1/2"-#9	0.108	124	1.330	3.15	0.960	2.625	0.174	0.114	0.114	9	3.8	74
FLATTENED-ALUMINUM													
HJE-027	1/2"-.050	0.034	22	0.500	1.26	0.292	1.000	0.104	0.038	0.038	24	9.5	58
HJE-028	1/2"-.080	0.056	35	0.500	1.26	0.290	1.000	0.105	0.060	0.060	24	9.5	58
HJE-029	3/4"-.050	0.034	14	0.923	2.10	0.679	1.812	0.122	0.038	0.038	13	5.7	74
HJE-030	3/4"- .080(Lt.)	0.056	26	0.923	2.10	0.637	1.750	0.143	0.060	0.060	13	5.7	69
HJE-031	3/4"- .080(Hvy.)	0.056	33	0.923	2.10	0.561	1.750	0.181	0.060	0.060	13	5.7	61
HJE-032	3/4"-.125	0.089	53	0.923	2.10	0.549	1.750	0.187	0.094	0.094	13	5.7	59
HJE-033	1 1/2"-.080	0.056	18	1.330	3.15	1.044	2.750	0.143	0.060	0.060	9	3.8	78
HJE-034	1 1/2"-.125	0.089	36	1.330	3.15	0.968	2.750	0.181	0.094	0.094	9	3.8	73

FLATTENED EXPANDED METALS

Refer-No.	DESIGNS	DIMENSION/DESIGN SIZE		THICKNESS
		SWD	LWD	
FLATTENED-STEEL				
HJE-035	3/16 - 22F	0.226	0.500	0.027
HJE-036	3/16 - 20F	0.226	0.500	0.032
HJE-037	1/4 - 20F	0.280	1.000	0.037
HJE-038	1/4 - 18F	0.280	1.000	0.045
HJE-039	5/16 - 20F	0.387	1.000	0.036
HJE-040	5/16 - 18F	0.387	1.000	0.045
HJE-041	1/2 - 20F	0.600	1.200	0.030
HJE-042	1/2 - 18F	0.600	1.200	0.045
HJE-043	1/2 - 16F	0.600	1.200	0.055
HJE-044	1/2 - 13F	0.600	1.200	0.070
HJE-045	3/4 - 16F	1.100	2.000	0.050
HJE-046	3/4 - 13F	1.090	2.000	0.070
HJE-047	3/4 - 9F	1.060	2.000	0.115
HJE-048	1 - 16F	1.175	2.375	0.050
HJE-049	1 - 14F	1.225	2.375	0.070
HJE-050	1 - 12F	1.200	2.375	0.085
HJE-051	1 - 10F	1.190	2.375	0.115
HJE-052	1 1/2 - 16F	1.510	3.000	0.055
HJE-053	1 1/2 - 13F	1.550	3.000	0.070
HJE-054	1 1/2 - 12F	1.510	3.000	0.085
HJE-055	1 1/2 - 9F	1.500	3.000	0.115
HJE-056	1 1/2 - 10F	1.500	3.000	0.115
FLATTENED-STAINLESS STEEL				
HJE-057	3/16 - 22F	0.293	0.500	0.029
HJE-058	3/16 - 20F	0.293	0.500	0.035
HJE-059	1/2 - 18F	0.570	1.200	0.040
HJE-060	1/2 - 16F	0.570	1.200	0.050
HJE-061	1/2 - 13F	0.570	1.200	0.070
HJE-062	3/4 - 16F	1.040	2.000	0.050
HJE-063	3/4 - 13F	1.040	2.000	0.070
HJE-064	3/4 - 9 (10)F	1.091	2.000	0.115
HJE-065	1 1/2 - 16F	1.500	3.000	0.050
HJE-066	1 1/2 - 13F	1.500	3.000	0.070
HJE-067	1 1/2 - 9(10)F	1.500	3.000	0.115
FLATTENED-ALUMINUM				
HJE-068	3/16 - .032F	0.226	0.500	0.032
HJE-069	5/16 - .032F	0.375	1.000	0.032
HJE-070	1/2 - .051F	0.570	1.200	0.051
HJE-071	1/2 - .081F	0.570	1.200	0.081
HJE-072	3/4 - .051F	1.090	2.000	0.051
HJE-073	3/4 - .081-HJE-	1.090	2.000	0.081
HJE-074	3/4 - .081HF	1.090	2.000	0.051
HJE-075	3/4 - .125F	1.150	2.000	0.120
HJE-076	3/4 - .188F	1.150	2.000	0.180
HJE-077	1 1/2 - .081F	1.525	3.000	0.081
HJE-078	1 1/2 - .125F	1.525	3.000	0.120

REGULAR EXPANDED METALS STEEL

Refer-No.	DESIGNS	DIMENSION/DESIGN SIZE		THICKNESS	OVERALL THICK.
		SWD	LWD		
REGULAR-STEEL					
HJE-079	3/32 - 24L	0.128	0.250	0.024	0.046
HJE-080	3/32 - 24H	0.128	0.250	0.024	0.051
HJE-081	3/16 - 22	0.203	0.500	0.030	0.070
HJE-082	3/16 - 20	0.203	0.500	0.036	0.080
HJE-083	1/4 - 20	0.250	1.000	0.036	0.135
HJE-084	1/4 - 18	0.250	1.000	0.048	0.147
HJE-085	5/16 - 20	0.292	0.750	0.036	0.125
HJE-086	5/16 - 18	0.292	0.750	0.048	0.170
HJE-087	1/2 - 20	0.500	0.120	0.036	0.140
HJE-088	1/2 - 18	0.500	0.120	0.048	0.172
HJE-089	1/2 - 16	0.500	0.120	0.060	0.175
HJE-090	1/2 - 13	0.500	0.120	0.090	0.204
HJE-091	3/4 - 16	0.923	2.000	0.060	0.210
HJE-092	3/4 - 13	0.923	2.000	0.090	0.205
HJE-093	3/4 - 10(13)	0.923	2.000	0.090	0.290
HJE-094	3/4 - 9	0.923	2.000	0.135	0.312
HJE-095	1 - 16	1.043	2.375	0.060	0.192
HJE-096	1 - 14	1.043	2.375	0.074	0.225
HJE-097	1 - 12	1.043	2.375	0.105	0.225
HJE-098	1 - 10(170)	1.043	2.375	0.135	0.375
HJE-099	1 - 10H	1.043	2.375	0.135	0.390
HJE-100	1 - 7	1.043	2.375	0.172	0.550
HJE-101	1 1/2 - 16	1.330	3.000	0.060	0.230
HJE-102	1 1/2 - 13	1.330	3.000	0.090	0.242
HJE-103	1 1/2 - 10(13)	1.330	3.000	0.090	0.284
HJE-104	1 1/2 - 12	1.330	3.000	0.105	0.225
HJE-105	1 1/2 - 9(10)	1.330	3.000	0.135	0.312
HJE-106	1 1/2 - 10H	1.330	3.000	0.135	0.460
HJE-107	1 1/2 - 6	1.330	3.000	0.198	0.433
REGULAR-STAINLESS STEEL					
HJE-108	1/2 - 18	0.500	1.200	0.050	0.164
HJE-109	1/2 - 16	0.500	1.200	0.062	0.164
HJE-110	1/2 - 13	0.500	1.200	0.093	0.225
HJE-111	3/4 - 16	0.923	2.000	0.062	0.202
HJE-112	3/4 - 13	0.923	2.000	0.093	0.202
HJE-113	3/4 - 9(10)	0.923	2.000	0.140	0.300
HJE-114	1 1/2 - 16	1.330	3.000	0.062	0.222
HJE-115	1 1/2 - 13	1.330	3.000	0.093	0.222
HJE-116	1 1/2 - 9(10)	1.330	3.000	0.140	0.280
REGULAR-ALUMINUM					
HJE-117	3/16 - .032	0.207	0.500	0.032	0.095
HJE-118	5/16 - .032	0.333	1.000	0.032	0.125
HJE-119	5/16 - .051	0.350	1.000	0.051	0.135
HJE-120	1/2 - .032	0.500	1.200	0.032	0.140
HJE-121	1/2 - .051	0.500	1.200	0.050	0.158
HJE-122	1/2 - .081	0.500	1.200	0.080	0.170
HJE-123	3/4 - .051	0.923	2.000	0.051	0.200
HJE-124	3/4 - .081-L	0.923	2.000	0.081	0.200
HJE-125	3/4 - .081H	0.923	2.000	0.080	0.300
HJE-126	3/4 - .125	0.923	2.000	0.125	0.305
HJE-127	3/4 - .188	0.923	2.000	0.188	0.430
HJE-128	1 1/2 - .081	1.330	3.000	0.081	0.240
HJE-129	1 1/2 - .125	1.330	3.000	0.125	0.320
HJE-130	1 1/2 - .188	1.330	3.000	0.188	0.410

FLATTENED EXPANDED MESHES

Refer-No.	Maximum LWM(mm)	Size of mesh SWMxLWM(mm)	Strand		Mass Kg/sq.m
			Width(mm)	Thickness(mm)	
HJE-20/48	1200	4x8	1.2	1.0	3.02
HJE-20/615	1200	6x15	1.2	1.0	3.6
HJE-20/820	1200	8x20	2.0	1.0	4.6
HJE-18/1230	1200	12x30	2.2	1.2	4.01
HJE-16/1230	1200	12x30	2.0	1.6	4.0
HJE-16/1230	1200	12x30	3.0	1.6	5.2
HJE-12/1240	1200	12x40	2.0	1.6	4.1
HJE-16/1240	1200	12x40	3.0	1.6	5.2
HJE-18/1540	1200	15x40	2.2	1.2	2.9
HJE-16/1540	1200	15x40	3.0	1.6	4.4
HJE-14/1540	1200	15x40	3.0	2.0	4.9
HJE-12/1540	1200	15x40	3.0	2.5	7.5
HJE-10/2060	1200	20x60	3.0	3.0	6.1
HJE-16/2550	1200	25x50	3.0	1.6	3.5
HJE-14/2550	1200	25x50	3.0	2.0	4.1
HJE-12/2550	1200	25x50	4.5	2.5	7.0
HJE-10/2550	1200	25x50	3.0	3.0	6.1
PIG FLOOR	1200	25x50	10.0	3.0	14.0
HJE-70/2550	1200	25x50	4.5	3.0	7.3
HJE-14/3075	1200	30x75	4.0	2.0	3.3
HJE-12/3075	1200	30x75	4.5	2.5	5.2
HJE-12/4085	1200	40x85	4.5	2.5	5.2
HJE-14/4575	1200	45x75	4.0	2.0	3.2
HJE-12/5085	1200	50x85	4.5	2.5	4.3

SOUTH AFRICA STANDARD

RAISED EXPANDED MESHES

Refer-No.	Maximum LWM(mm)	Size of mesh SWMxLWM (mm)	Strand		Mass Kg/sq.m
			Width(mm)	Thickness(mm)	
HJE-24/36	1200	3 x 6	1.0	0.6	2.4
HJE-24/48	1200	4 x 8	1.0	0.6	1.9
HJE-20/48	1200	4 x 8	1.2	1.0	3.9
HJE-24/615	1200	6 x 15	0.8	0.6	1.2
HJE-22/615	1200	6 x 15	1.0	0.8	2.2
HJE-20/615	1200	6 x 15	1.2	1.0	3.0
HJE-20/820	1200	8 x 20	2.0	1.0	4.2
HJE-18/820	1200	8 x 20	2.0	1.2	4.7
HJE-18/1230	1200	12 x 30	1.5	1.2	2.6
HJE-16/1230	1200	12 x 30	3.0	1.6	4.1
HJE-14/1230	1200	12 x 30	2.5	2.0	6.3
HJE-18/1240	1200	12 x 40	1.6	1.2	2.4
HJE-16/1240	1200	12 x 40	2.2	1.6	4.6
HJE-14/1240	1200	12 x 40	2.5	2.0	5.2
HJE-12/1240	1200	12 x 40	3.0	2.5	6.5
HJE-16/1540	1200	15 x 40	2.2	1.6	3.9
HJE-14/1540	1200	15 x 40	3.0	2.0	5.9
HJE-12/1540	1200	15 x 40	3.0	2.5	9.1
HJE-18/2550	1200	25 x 50	1.6	1.2	1.5
HJE-16/2550	1200	25 x 50	3.0	1.6	3.5
HJE-14/2550	1200	25 x 50	3.0	2.0	3.4
HJE-10/2550	1200	25 x 50	3.0	3.0	4.4
HJE- 6 -1	1200	25 x 50	6.0	4.5	15.0
HJE- 6 -2	1200	25 x 50	4.5	4.5	9.5
HJE-12/2060	1200	20 x 60	2.5	2.5	5.1
HJE-10/2060	1200	20 x 60	3.0	3.0	7.1
HJE-10/2060-1	1200	20 x 60	4.5	3.0	8.0
HJE- 5 - 1	1200	20 x 60	6.0	4.5	16.0
HJE- 5 - 2	1200	20 x 60	4.5	4.5	9.5
HJE-10/3075	1200	30 x 75	3.0	3.0	4.4
HJE-10/3075	1200	30 x 75	5.0	3.0	7.0
HJE- 7 - 1	1200	30 x 75	6.0	4.5	13.42
HJE- 7 - 2	1200	30 x 75	4.5	4.5	10.17
HJE-10/4085	1200	40 x 85	3.0	3.0	3.6
HJE- 4 - 1	1200	40 x 85	10.0	4.5	18.5
HJE- 4 - 2	1200	40 x 85	6.0	4.5	10.5
HJE- 2 - 1	1200	40 x 115	10.0	4.5	19.2
HJE- 2 - 2	1200	40 x 115	8.0	4.5	14.0
HJE- 2 - 3	1200	40 x 115	6.0	4.5	10.0
HJE- 2 - 4	1200	40 x 115	4.5	4.5	7.9
HJE- 2 - 5	1200	40 x 115	4.5	3.0	5.8
HJE- 2 - 6	1200	40 x 115	3.0	3.0	3.8
HJE- 3 - 1	1200	50 x 100	6.0	4.5	8.7
HJE- 3 - 2	1200	50 x 100	3.0	3.0	2.5
HJE- 8 - 3	1200	75 x 200	4.5	4.5	4.7
HJE- 8 - 2	1200	75 x 200	6.0	4.5	5.6
HJE- 8 - 1	1200	75 x 200	10.0	4.5	9.7
HJE- 20/40	1200	4 x 8	1.2	1.0	3.9

JAPAN/THAILAND STANDARD

EXPANDED METAL

Designs	Short Way of Diamond	Long Way of Diamond	Thickness	Width	Weigh Per Sheet (kg.)
					4 ft x 8 t
	(SWD)	(LWD)	(T)	(W)	LWMxSWM
Expanded metal XS Styles					
XS-31	12 mm(0.472 ")	30.5 mm(1.201 ")	1.2 mm(0.047 ")	1.5 mm(0.059 ")	5.3 kg.
XS-32	12 mm(0.472 ")	30.5 mm(1.201 ")	1.6 mm(0.063 ")	2.0 mm(0.079 ")	9.0 kg.
XS-33	12 mm(0.472 ")	30.5 mm(1.201 ")	2.3 mm(0.091 ")	3.0 mm(0.118 ")	19.1 kg.
XS-41	22 mm(0.866 ")	50.8 mm(2.000 ")	1.6 mm(0.063 ")	2.0 mm(0.079 ")	6.9 kg.
XS-42	22 mm(0.866 ")	50.8 mm(2.000 ")	2.3 mm(0.091 ")	2.5 mm(0.98 ")	12.4 kg.
XS-43	22 mm(0.866 ")	50.8 mm(2.000 ")	3.3 mm(0.126 ")	3.5 mm(0.138 ")	24.2 kg.
XS-51	25 mm(0.984 ")	61 mm(2.402 ")	1.6 mm(0.063 ")	2.5 mm(0.079 ")	7.6 kg.
XS-52	25 mm(0.984 ")	61 mm(2.402 ")	2.3 mm(0.091 ")	3.0 mm(0.098 ")	13.1 kg.
XS-53	25 mm(0.984 ")	61 mm(2.402 ")	3.2 mm(0.126 ")	4.0 mm(0.138 ")	24.2 kg.
XS-61	34 mm(1.339 ")	76.2 mm(3.000 ")	2.3 mm(0.091 ")	3.0 mm(0.118 ")	9.6 kg.
XS-62	34 mm(1.339 ")	76.2 mm(3.000 ")	3.2 mm(0.126 ")	4.0 mm(0.157 ")	17.8 kg.
XS-63	34 mm(1.339 ")	76.2 mm(3.000 ")	4.5 mm(0.177 ")	5.0 mm(0.197 ")	31.3 kg.
XS-71	50 mm(1.969 ")	152.4 mm(6.000 ")	2.3 mm(0.091 ")	3.5 mm(0.138 ")	7.5 kg.
XS-72	50 mm(1.969 ")	152.4 mm(6.000 ")	3.2 mm(0.126 ")	4.0 mm(0.157 ")	12.0 kg.
XS-73	50 mm(1.969 ")	152.4 mm(6.000 ")	4.5 mm(0.177 ")	5.0 mm(0.197 ")	21.0 kg.
XS-81	75 mm(2.953 ")	203.2 mm(8.000 ")	3.2 mm(0.126 ")	4.0 mm(0.157 ")	8.1 kg.
XS-82	75 mm(2.953 ")	203.2 mm(8.000 ")	4.5 mm(0.177 ")	5.0 mm(0.197 ")	14.2 kg.
XS-83	75 mm(2.953 ")	203.2 mm(8.000 ")	6 mm(0.236 ")	6.0 mm(0.236 ")	22.8 kg.

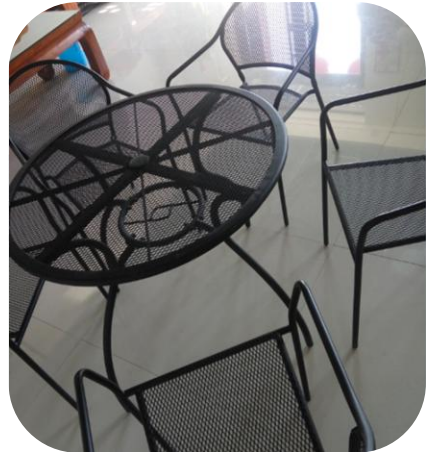
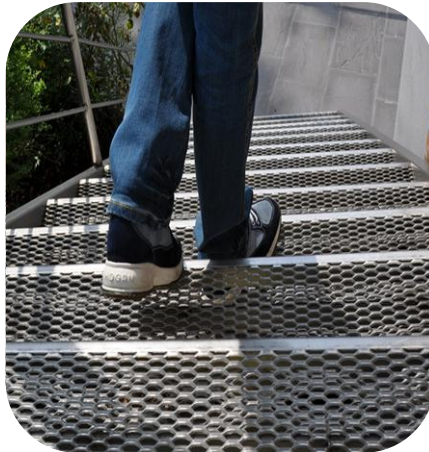
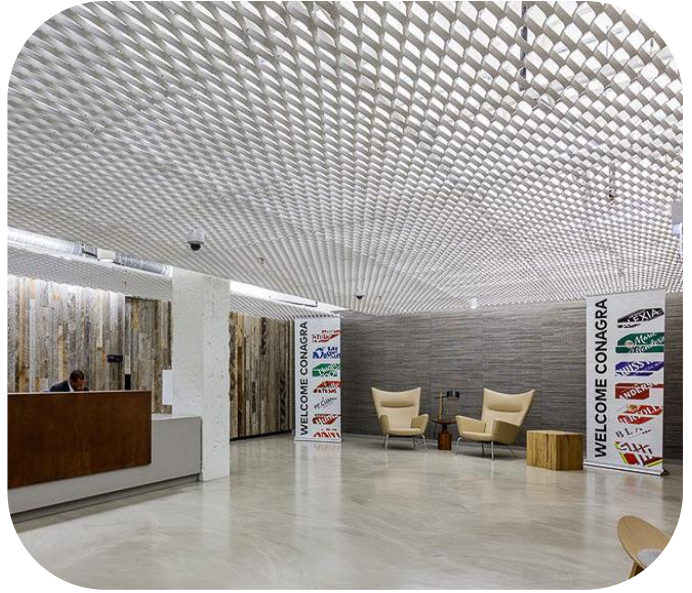
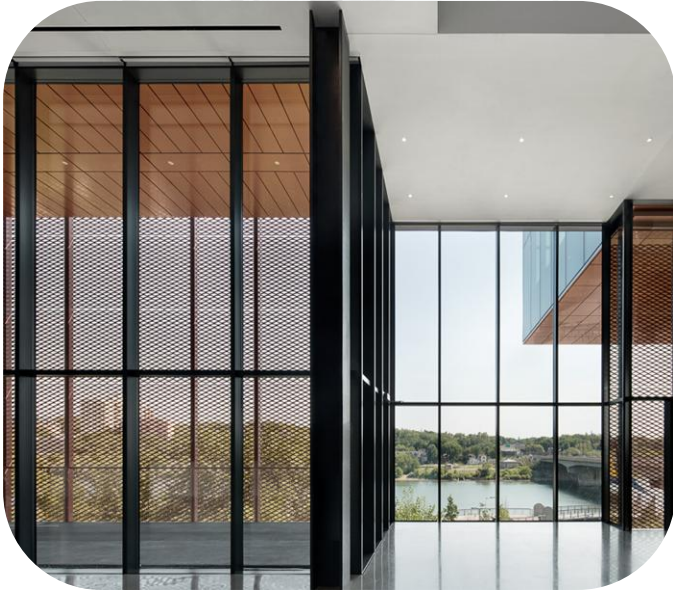
EXPANDED METALS – SPECIFICATIONS

Category	Refer-No.	Material Type	Mesh Opening		Thickness (mm)	Strand (mm)	Weight+ 10%(kg/m2)
			SWD (mm)	LWD (mm)			
Fine Meshes	HJEX-0715	Steel/GI	10	21	0.7	1.5	0.7
	HJEX-1015	Steel	9	29	1.0	1.5	2.69
	HJEX-1515	Steel/GI	9	29	1.5	1.5	4.03
	HJEX-1518	Steel	6	12	1.5	1.8	7.05
	HJEX-1020	Steel	16	38	1.0	2.0	2.00
	HJEX-1520	Steel	17	38	1.5	2.0	3.15
	HJEX-1520T	Steel	17	32	1.5	2.0	3.02
	HJEX-1528	Steel	22	57	1.5	2.8	3.06
	HJEX-2015	Steel	9	29	2.0	1.5	5.50
	HJEX-2015T	Steel	13	30	2.0	1.5	5.50
	HJEX-2028	Steel	22	57	2.0	2.8	3.90
	HJEX-2020	Steel	32	38	2.0	2.0	2.00
	HJEX-2030	Steel	35	76	2.0	3.0	2.65
Medium Meshes	HJEX-3040	Steel	22	50	3.0	4	9.00
	HJEX-3035	Steel	22	57	3.0	3.5	7.30
	HJEX-3035T	Steel	25	61	3.0	3.5	7.53
	HJEX-3045	Steel	35	76	3.0	4.5	6.60
	HJEX-3060	Steel	42	115	3.0	6.0	8.00
	HJEX-3030	Steel	22	57	3.0	3.0	2.83
	HJEX-3050	Steel	25	57	3.0	5.0	4.71
	HJEX-5050	Steel	35	76	5.0	5.0	7.05
	HJEX-3075	Steel	75	200	3.0	7.5	5.20
	HJEX-45060	Steel	35	76	4.5	6.0	12.43
HJEX-4560	Steel	42	114	4.5	6.0	10.41	
Balustrade Meshes	HJEX-3032	Steel	25	40/81	3.0	3.2	6.05
	HJEX-3032A	Aluminium	25	40/81	3.0	3.2	2.09
	HJEX-3033	Steel	30	50/110	3.0	3.3	5.90
Walkway Meshes	HJEX-4560T	Steel	34	135	4.5	6.0	10.90
	HJEX-45600	Steel	25	61	4.5	6.0	17.90
	HJEX-50075	Steel	27	76	5.0	7.5	23.50
	HJEX-50105	Steel	30	75	5.0	10.5	27.50
	HJEX-30080	Steel	30	75	3.0	8.0	12.55
	HJEX-50080	Steel	42	135	5.0	8.0	14.95
	HJEX-50110	Steel	45	135	5.0	11.0	19.50
HJEX-6070T	Steel	34	135	6.0	7.0	19.40	
Louvre Meshes	J3030	Steel	12.5	75	3.0	3.0	12.00
	HJEX-1063	Steel	16	76	1.0	6.3	7.49
	HJEX-1563	Steel	16	76	1.5	6.3	10.40

WALKWAY MESH : LOAD /SPAN TABLE

Refer-No.	Type Of Loads	Simple Span(mm)			Double Span(mm)			Triple Span(mm)		
		600	900	1200	300	450	600	200	300	400
HJE-4560T	Uniform Load (KN/m ²)	4.90	2.25	1.22	20.00	9.00	5.21	43.85	21.40	12.14
	Point Load (KN/M ²)	1.10	0.74	0.54	2.50	1.68	1.27	4.00	2.68	2.04
HJE-50075	Uniform Load (KN/m ²)	5.80	2.50	1.50	23.80	10.70	6.10	51.00	25.40	14.60
	Point Load (KN/M ²)	1.30	0.85	0.64	2.95	1.97	1.50	4.55	3.18	2.42
HJE-50105	Uniform Load (KN/m ²)	8.20	3.65	2.02	33.80	15.30	8.66	70.00	36.10	20.50
	Point Load (KN/M ²)	1.80	1.22	0.92	4.20	2.80	2.12	6.40	4.56	3.45
HJE-30080	Uniform Load (KN/m ²)				7.25	2.61	1.82	19.13	8.50	4.78
	Point Load (KN/M ²)				1.32	0.53	0.44	1.43	0.96	0.72
HJE-50080	Uniform Load (KN/m ²)	4.90	2.25	1.22	20.00	9.00	5.21	43.85	21.40	12.14
	Point Load (KN/M ²)	1.10	0.74	0.54	2.50	1.68	1.27	4.00	2.68	2.04
HJE-50110	Uniform Load (KN/m ²)	6.43	2.90	1.73	26.73	11.93	6.83	56.00	28.75	16.12
	Point Load (KN/M ²)	1.44	0.96	0.72	3.30	2.22	1.68	5.06	3.56	2.70
HJE-6070T	Uniform Load (KN/m ²)	6.43	2.90	1.73	26.37	11.93	6.83	56.00	28.75	16.12
	Point Load (KN/M ²)	1.44	0.96	0.72	3.30	2.22	1.68	5.06	3.56	2.70

APPLICATION



APPLICATION

